

AQP6 Polyclonal Antibody

Description

Product type	Primary Antibody
Code	BT-AP14266
Host	Rabbit
Isotype	IgG
Size	20ul, 50ul, 100ul
Immunogen	Synthesized peptide derived from human protein . at AA range: 60-140
Mol wt	N/A
Species reactivity	Human, Rat, Mouse
Clonality	Polyclonal
Recommended application	WB, ELISA
Concentration	1 mg/ml
Full name	Aquaporin-6
Synonyms	Aquaporin-6 ;AQP-6;Aquaporin-2-like;Kidney-specific aquaporin;hKID

This product is for research use only, not for use in human, therapeutic or diagnostic procedure.

Background

The protein encoded by this gene is an aquaporin protein, which functions as a water channel in cells. Aquaporins are a family of small integral membrane proteins related to the major intrinsic protein (MIP or AQP0). This protein is specific for the kidney. This gene and related family members AQP0, AQP2, and AQP5 reside in a cluster on chromosome 12q13.

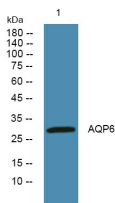
Recommended Dilution

WB: 1: 500 - 1: 2000

ELISA: 1: 5000 - 1: 20000

Not yet tested in other applications.

Images



Western blot analysis of lysates from K562 cells, primary antibody was diluted at 1:1000, 4°C overnight

Storage

-20°C for 1 year