

## SLUG Polyclonal Antibody

### Description

<b>Product type</b>	Primary Antibody
<b>Code</b>	BT-AP14280
<b>Host</b>	Rabbit
<b>Isotype</b>	IgG
<b>Size</b>	20ul, 50ul, 100ul
<b>Immunogen</b>	Recombinant Protein of SLUG
<b>Mol wt</b>	N/A
<b>Species reactivity</b>	Human, Mouse, Rat
<b>Clonality</b>	Polyclonal
<b>Recommended application</b>	WB, IHC-p, IF
<b>Concentration</b>	
<b>Full name</b>	Zinc finger protein SNAI2
<b>Synonyms</b>	Zinc finger protein SNAI2; SNAI2; SLUG; SLUGH; Zinc finger protein SNAI2; Neural crest transcription factor Slug; Protein snail homolog 2

This product is for research use only, not for use in human, therapeutic or diagnostic procedure.

### Background

This gene encodes a member of the Snail family of C2H2-type zinc finger transcription factors. The encoded protein acts as a transcriptional repressor that binds to E-box motifs and is also likely to repress E-cadherin transcription in breast carcinoma. This protein is involved in epithelial-mesenchymal transitions and has antiapoptotic activity. Mutations in this gene may be associated with sporadic cases of neural tube defects.

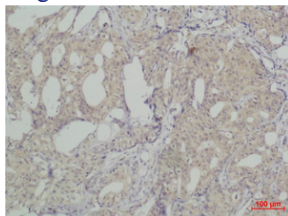
### Recommended Dilution

WB: 1: 500 - 1: 1000

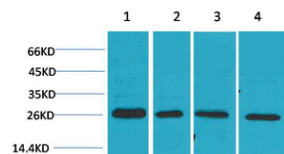
IHC: 1: 200 - 1: 500

Not yet tested in other applications.

### Images



Immunohistochemical analysis of paraffin-embedded human Breast carcinoma using SLUG Polyclonal Antibody.



Western blot analysis of 1) MCF7, 2) Mouse Heart Tissue, 3) Rat Heart Tissue, 4) Rat Brain Tissue using SLUG Polyclonal Antibody. Secondary antibody was diluted at 1:20000

## Storage

-20°C for 1 year

501 Changsheng S Rd, Nanhu Dist, Jiaxing, Zhejiang, China

Tel: 86 21 31007137 | E-mail: [save@bt-laboratory.com](mailto:save@bt-laboratory.com) | [www.bt-laboratory.com](http://www.bt-laboratory.com)