

ARC Polyclonal Antibody

Description

Product type	Primary Antibody
Code	BT-AP14305
Host	Rabbit
Isotype	IgG
Size	20ul, 50ul, 100ul
Immunogen	Synthesized peptide derived from human protein . at AA range: 70-150
Mol wt	N/A
Species reactivity	Human, Rat, Mouse
Clonality	Polyclonal
Recommended application	WB, ELISA
Concentration	1 mg/ml
Full name	Activity-regulated cytoskeleton-associated protein
Synonyms	Activity-regulated cytoskeleton-associated protein ;ARC/ARG3.1;Activity-regulated gene 3.1 protein homolog;Arg3.1

This product is for research use only, not for use in human, therapeutic or diagnostic procedure.

Background

Required for consolidation of synaptic plasticity as well as formation of long-term memory. Regulates endocytosis of AMPA receptors in response to synaptic activity. Required for homeostatic synaptic scaling of AMPA receptors.,Belongs to the ARC/ARG3.1 family.,subcellular location:Associated with the cell cortex of neuronal soma and dendrites. Enriched in postsynaptic density of dendritic spines. Associated with the sperm tail.,subunit:Interacts with SH3GL1/endophilin-2, SH3GL3/endophilin-3 and DNM2/DYN2.,

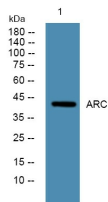
Recommended Dilution

WB: 1: 500 - 1: 2000

ELISA: 1: 5000 - 1: 20000

Not yet tested in other applications.

Images



Western blot analysis of lysates from KB cells, primary antibody was diluted at 1:1000, 4°C overnight

Storage

-20°C for 1 year