

SMAD7 Polyclonal Antibody

Description

Product type	Primary Antibody
Code	BT-AP14312
Host	Rabbit
Isotype	IgG
Size	20ul, 50ul, 100ul
Immunogen	Synthesized peptide derived from part region of human protein
Mol wt	N/A
Species reactivity	Human, Mouse, Rat
Clonality	Polyclonal
Recommended application	WB, ELISA
Concentration	1 mg/ml
Full name	Mothers against decapentaplegic homolog 7
Synonyms	Mothers against decapentaplegic homolog 7 ;MAD homolog 7;Mothers against DPP homolog 7;Mothers against decapentaplegic homolog 8;MAD homolog 8;Mothers against DPP homolog 8;SMAD family membe

This product is for research use only, not for use in human, therapeutic or diagnostic procedure.

Background

The protein encoded by this gene is a nuclear protein that binds the E3 ubiquitin ligase SMURF2. Upon binding, this complex translocates to the cytoplasm, where it interacts with TGF-beta receptor type-1 (TGFBRI), leading to the degradation of both the encoded protein and TGFBRI. Expression of this gene is induced by TGFBRI. Variations in this gene are a cause of susceptibility to colorectal cancer type 3 (CRCS3). Several transcript variants encoding different isoforms have been found for this gene.

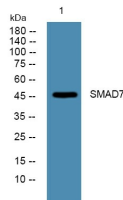
Recommended Dilution

WB: 1: 500 - 1: 2000

ELISA: 1: 5000 - 1: 20000

Not yet tested in other applications.

Images



Western blot analysis of lysates from K562 cells, primary antibody was diluted at 1:1000, 4°C overnight

Storage

-20°C for 1 year