

## SMAGP Polyclonal Antibody

### Description

<b>Product type</b>	Primary Antibody
<b>Code</b>	BT-AP14313
<b>Host</b>	Rabbit
<b>Isotype</b>	IgG
<b>Size</b>	20ul, 50ul, 100ul
<b>Immunogen</b>	Synthesized peptide derived from human protein . at AA range: 30-110
<b>Mol wt</b>	N/A
<b>Species reactivity</b>	Human, Rat, Mouse
<b>Clonality</b>	Polyclonal
<b>Recommended application</b>	WB, ELISA
<b>Concentration</b>	1 mg/ml
<b>Full name</b>	Small cell adhesion glycoprotein
<b>Synonyms</b>	Small cell adhesion glycoprotein ;Small transmembrane and glycosylated protein

**This product is for research use only, not for use in human, therapeutic or diagnostic procedure.**

### Background

May play a role in epithelial cell-cell contacts. May play a role in tumor invasiveness and metastasis formation.,PTM:O-glycosylated. The O-glycan is modified with sialic acid residues.,Belongs to the SMAGP family.,subcellular location:Predominantly on lateral parts of the membrane, at cell-cell epithelial junctions. Detected on cytoplasmic membranes in undifferentiated tumors.,tissue specificity:Detected in breast, endometrium, colon and biliary tract. Detected in polarized epithelial structures characterized by cell-cell adhesion (at protein level),

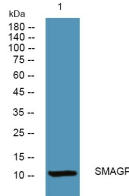
### Recommended Dilution

WB: 1: 500 - 1: 2000

ELISA: 1: 5000 - 1: 20000

Not yet tested in other applications.

### Images



Western blot analysis of lysates from DU145 cells, primary antibody was diluted at 1:1000, 4°C overnight

### Storage

-20°C for 1 year