

ASIC1 Polyclonal Antibody

Description

Product type	Primary Antibody
Code	BT-AP14341
Host	Rabbit
Isotype	IgG
Size	20ul, 50ul, 100ul
Immunogen	Synthetic peptide from human protein at AA range: 220-280
Mol wt	N/A
Species reactivity	Human, Mouse, Rat
Clonality	Polyclonal
Recommended application	WB, IHC-p, IF, IHC-f, ELISA
Concentration	1 mg/ml
Full name	Acid-sensing ion channel 1
Synonyms	Acid-sensing ion channel 1 ;ASIC1;Amiloride-sensitive cation channel 2, neuronal;Brain sodium channel 2;BNaC2; Acid-sensing ion channel 1; ASIC1; Amiloride-sensitive cation channel 2, neuronal; Brain sodium channel 2; BNaC2

This product is for research use only, not for use in human, therapeutic or diagnostic procedure.

Background

This gene encodes a member of the acid-sensing ion channel (ASIC) family of proteins, which are part of the degenerin/epithelial sodium channel (DEG/ENaC) superfamily. Members of the ASIC family are sensitive to amiloride and function in neurotransmission. The encoded proteins function in learning, pain transduction, touch sensation, and development of memory and fear. Alternatively spliced transcript variants have been described.

Recommended Dilution

WB: 1: 500 - 1: 2000

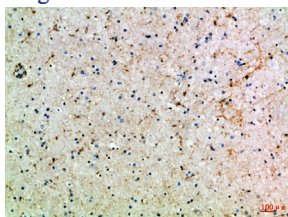
IHC-p: 1: 500 - 1: 200

ELISA: 1: 20000

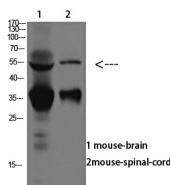
ELISA: 1: 10000 - 1: 20000

Not yet tested in other applications.

Images



Immunohistochemical analysis of paraffin-embedded Human-brain, antibody was diluted at 1:100



Western blot analysis of mouse-brain, mouse-spinal-cord lysate, antibody was diluted at 1000.

Secondary antibody was diluted at 1:20000

Storage

-20°C for 1 year

501 Changsheng S Rd, Nanhu Dist, Jiaxing, Zhejiang, China

Tel: 86 21 31007137 | E-mail: save@bt-laboratory.com | www.bt-laboratory.com