

## SOCS-3 Polyclonal Antibody

### Description

<b>Product type</b>	Primary Antibody
<b>Code</b>	BT-AP14358
<b>Host</b>	Rabbit
<b>Isotype</b>	IgG
<b>Size</b>	20ul, 50ul, 100ul
<b>Immunogen</b>	Synthetic peptide from human protein at AA range: 20-70
<b>Mol wt</b>	N/A
<b>Species reactivity</b>	Human, Mouse, Rat
<b>Clonality</b>	Polyclonal
<b>Recommended application</b>	WB, IHC-p, IF
<b>Concentration</b>	1 mg/ml
<b>Full name</b>	Suppressor of cytokine signaling 3
<b>Synonyms</b>	Suppressor of cytokine signaling 3 ;SOCS-3;Cytokine-inducible SH2 protein 3;CIS-3;STAT-induced STAT inhibitor 3;SSI-3; Suppressor of cytokine signaling 3; SOCS-3; Cytokine-inducible SH2 protein 3; CIS-3; STAT-induced STAT inhibitor 3; SSI-3

**This product is for research use only, not for use in human, therapeutic or diagnostic procedure.**

### Background

This gene encodes a member of the STAT-induced STAT inhibitor (SSI), also known as suppressor of cytokine signaling (SOCS), family. SSI family members are cytokine-inducible negative regulators of cytokine signaling. The expression of this gene is induced by various cytokines, including IL6, IL10, and interferon (IFN)-gamma. The protein encoded by this gene can bind to JAK2 kinase, and inhibit the activity of JAK2 kinase. Studies of the mouse counterpart of this gene suggested the roles of this gene in the negative regulation of fetal liver hematopoiesis, and placental development.

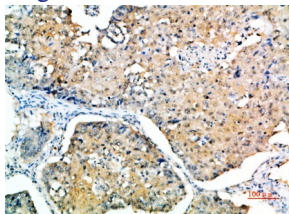
### Recommended Dilution

WB: 1: 500 - 1: 2000

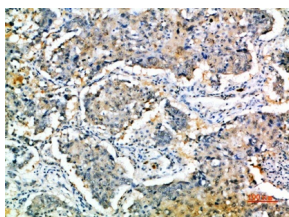
IHC-p: 1: 50 - 1: 300

Not yet tested in other applications.

### Images



Immunohistochemical analysis of paraffin-embedded human-lung-cancer, antibody was diluted at 1:200



Immunohistochemical analysis of paraffin-embedded human-lung-cancer, antibody was diluted at 1:200

## Storage

-20°C for 1 year

501 Changsheng S Rd, Nanhu Dist, Jiaxing, Zhejiang, China

Tel: 86 21 31007137 | E-mail: [save@bt-laboratory.com](mailto:save@bt-laboratory.com) | [www.bt-laboratory.com](http://www.bt-laboratory.com)