

SP5 Polyclonal Antibody

Description

Product type	Primary Antibody
Code	BT-AP14398
Host	Rabbit
Isotype	IgG
Size	20ul, 50ul, 100ul
Immunogen	Synthesized peptide derived from human protein . at AA range: 10-90
Mol wt	N/A
Species reactivity	Human, Mouse
Clonality	Polyclonal
Recommended application	WB, ELISA
Concentration	1 mg/ml
Full name	Transcription factor Sp5
Synonyms	Transcription factor Sp5

This product is for research use only, not for use in human, therapeutic or diagnostic procedure.

Background

Binds to GC boxes promoters elements. Probable transcriptional activator that has a role in the coordination of changes in transcription required to generate pattern in the developing embryo.,Belongs to the Sp1 C2H2-type zinc-finger protein family.,Contains 3 C2H2-type zinc fingers.,

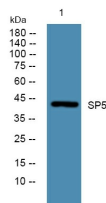
Recommended Dilution

WB: 1: 500 - 1: 2000

ELISA: 1: 5000 - 1: 20000

Not yet tested in other applications.

Images



Western blot analysis of lysates from PC12 cells, primary antibody was diluted at 1:1000, 4°C overnight

Storage

-20°C for 1 year