

SPA12 Polyclonal Antibody

Description

Product type	Primary Antibody
Code	BT-AP14401
Host	Rabbit
Isotype	IgG
Size	20ul, 50ul, 100ul
Immunogen	Synthesized peptide derived from part region of human protein
Mol wt	N/A
Species reactivity	Human, Rat, Mouse
Clonality	Polyclonal
Recommended application	WB, ELISA
Concentration	1 mg/ml
Full name	Serpin A12
Synonyms	Serpin A12 ;OL-64;Visceral adipose tissue-derived serine protease inhibitor;Vaspin;Visceral adipose-specific serpin

This product is for research use only, not for use in human, therapeutic or diagnostic procedure.

Background

May modulates insulin action conceivably only in the presence of its yet undefined target proteases in white adipose tissues. Belongs to the serpin family. Tissue specificity: Expressed in visceral adipose tissues.

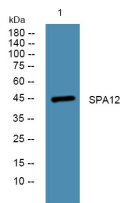
Recommended Dilution

WB: 1: 500 - 1: 2000

ELISA: 1: 5000 - 1: 20000

Not yet tested in other applications.

Images



Western blot analysis of lysates from KB cells, primary antibody was diluted at 1:1000, 4°C overnight

Storage

-20°C for 1 year