

SphK2(Phospho Thr614) Polyclonal Antibody

Description

Product type	Primary Antibody
Code	BT-AP14421
Host	Rabbit
Isotype	IgG
Size	20ul, 50ul, 100ul
Immunogen	The antiserum was produced against synthesized peptide derived from human SPHK2 around the phosphorylation site of Thr614. AA range:580-629
Mol wt	69217
Species reactivity	Human, Mouse, Rat
Clonality	Polyclonal
Recommended application	IHC-p, IF, WB, ELISA
Concentration	1 mg/ml
Full name	Sphingosine kinase 2
Synonyms	Sphingosine kinase 2; SPHK2; Sphingosine kinase 2; SK 2; SPK 2

This product is for research use only, not for use in human, therapeutic or diagnostic procedure.

Background

This gene encodes one of two sphingosine kinase isozymes that catalyze the phosphorylation of sphingosine into sphingosine 1-phosphate. Sphingosine 1-phosphate mediates many cellular processes including migration, proliferation and apoptosis, and also plays a role in several types of cancer by promoting angiogenesis and tumorigenesis. The encoded protein may play a role in breast cancer proliferation and chemoresistance. Alternatively spliced transcript variants encoding multiple isoforms have been observed for this gene.

Recommended Dilution

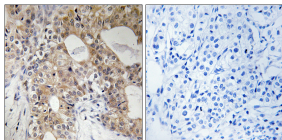
WB: 1: 500 - 1: 2000

IHC-p: 1: 100 - 1: 300

ELISA: 1: 5000

Not yet tested in other applications.

Images



Immunohistochemistry analysis of paraffin-embedded human breast carcinoma, using SPHK2 (Phospho-Thr614) Antibody. The picture on the right is blocked with the phospho peptide.

Storage

-20°C for 1 year