

ATOH8 Polyclonal Antibody

Description

| | |
|--------------------------------|---|
| Product type | Primary Antibody |
| Code | BT-AP14422 |
| Host | Rabbit |
| Isotype | IgG |
| Size | 20ul, 50ul, 100ul |
| Immunogen | Synthesized peptide derived from part region of human protein |
| Mol wt | N/A |
| Species reactivity | Human, Rat, Mouse |
| Clonality | Polyclonal |
| Recommended application | WB, ELISA |
| Concentration | 1 mg/ml |
| Full name | Protein atonal homolog 8 |
| Synonyms | Protein atonal homolog 8 ;Class A basic helix-loop-helix protein 21;bHLHa21;Helix-loop-helix protein hATH-6;hATH6 |

This product is for research use only, not for use in human, therapeutic or diagnostic procedure.

Background

Putative transcription factor. May be implicated in specification and differentiation of neuronal cell lineages in the brain. May participate in kidney development and may be involved in podocyte differentiation. Contains 1 basic helix-loop-helix (bHLH) domain. subunit: Efficient DNA binding requires dimerization with another bHLH protein. tissue specificity: Expressed in lung, liver, kidney, heart and pancreas. Expressed in endothel of umbilical vessels.

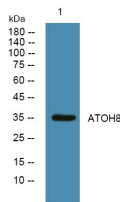
Recommended Dilution

WB: 1: 500 - 1: 2000

ELISA: 1: 5000 - 1: 20000

Not yet tested in other applications.

Images



Western blot analysis of lysates from SW480 cells, primary antibody was diluted at 1:1000, 4°C overnight

Storage

-20°C for 1 year