

Bcl-Xl Polyclonal Antibody

Description

Product type	Primary Antibody
Code	BT-AP14436
Host	Rabbit
Isotype	IgG
Size	20ul, 50ul, 100ul
Immunogen	Recombinant Protein of Bcl-Xl
Mol wt	N/A
Species reactivity	Human, Rat, Mouse
Clonality	Polyclonal
Recommended application	IHC-p, IF
Concentration	1 mg/ml
Full name	Bcl-2-like protein 1
Synonyms	Bcl-2-like protein 1 ;Bcl2-L-1;Apoptosis regulator Bcl-X; Bcl-2-like protein 1; Bcl2-L-1; Apoptosis regulator Bcl-X

This product is for research use only, not for use in human, therapeutic or diagnostic procedure.

Background

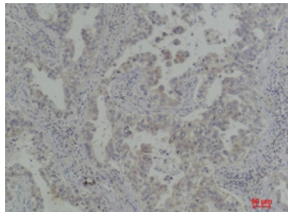
The protein encoded by this gene belongs to the BCL-2 protein family. BCL-2 family members form hetero- or homodimers and act as anti- or pro-apoptotic regulators that are involved in a wide variety of cellular activities. The proteins encoded by this gene are located at the outer mitochondrial membrane, and have been shown to regulate outer mitochondrial membrane channel (VDAC) opening. VDAC regulates mitochondrial membrane potential, and thus controls the production of reactive oxygen species and release of cytochrome C by mitochondria, both of which are the potent inducers of cell apoptosis. Alternative splicing results in multiple transcript variants encoding two different isoforms. The longer isoform acts as an apoptotic inhibitor and the shorter isoform acts as an apoptotic activator.

Recommended Dilution

IHC: 1: 50 - 1: 200

Not yet tested in other applications.

Images



Immunohistochemical analysis of paraffin-embedded Human Lung Carcinoma using Bcl-Xl Rabbit pAb diluted at 1:200.

Storage

-20°C for 1 year