

## SPT4H Polyclonal Antibody

### Description

<b>Product type</b>	Primary Antibody
<b>Code</b>	BT-AP14437
<b>Host</b>	Rabbit
<b>Isotype</b>	IgG
<b>Size</b>	20ul, 50ul, 100ul
<b>Immunogen</b>	Synthesized peptide derived from human protein . at AA range: 40-120
<b>Mol wt</b>	N/A
<b>Species reactivity</b>	Human, Rat, Mouse
<b>Clonality</b>	Polyclonal
<b>Recommended application</b>	WB, ELISA
<b>Concentration</b>	1 mg/ml
<b>Full name</b>	Transcription elongation factor SPT4
<b>Synonyms</b>	Transcription elongation factor SPT4 ;hSPT4;DRB sensitivity-inducing factor 14 kDa subunit;DSIF p14;DRB sensitivity-inducing factor small subunit;DSIF small subunit

**This product is for research use only, not for use in human, therapeutic or diagnostic procedure.**

### Background

This gene encodes the small subunit of DRB (5,6-dichloro-1-beta-d-ribofuranosylbenzimidazole) sensitivity-inducing factor (DSIF) complex, which regulates mRNA processing and transcription elongation by RNA polymerase II. The encoded protein is localized to the nucleus and interacts with the large subunit (SUPT5H) to form the DSIF complex. Related pseudogenes have been identified on chromosomes 2 and 12. Alternatively spliced transcript variants have been found for this gene.

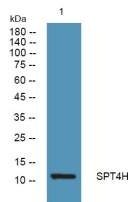
### Recommended Dilution

WB: 1: 500 - 1: 2000

ELISA: 1: 5000 - 1: 20000

Not yet tested in other applications.

### Images



Western blot analysis of lysates from K562 cells, primary antibody was diluted at 1:1000, 4°C overnight

### Storage

-20°C for 1 year