

BECP1 Polyclonal Antibody

Description

Product type	Primary Antibody
Code	BT-AP14449
Host	Rabbit
Isotype	IgG
Size	20ul, 50ul, 100ul
Immunogen	Synthesized peptide derived from part region of human protein
Mol wt	N/A
Species reactivity	Human, Rat, Mouse
Clonality	Polyclonal
Recommended application	WB, ELISA
Concentration	1 mg/ml
Full name	Putative beclin-1-like protein
Synonyms	Putative beclin-1-like protein ;Beclin-1 autophagy-related pseudogene 1

This product is for research use only, not for use in human, therapeutic or diagnostic procedure.

Background

BECN2 (Beclin 2) is a Protein Coding gene. Among its related pathways are Autophagy Pathway and Kaposi's sarcoma-associated herpesvirus infection. An important paralog of this gene is BECN1. Involved in 2 distinct lysosomal degradation pathways: acts as a regulator of autophagy and as a regulator of G-protein coupled receptors turnover. Regulates degradation in lysosomes of a variety of G-protein coupled receptors via its interaction with GPRASP1/GASP1.

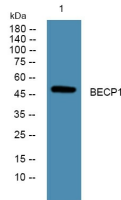
Recommended Dilution

WB: 1: 500 - 1: 2000

ELISA: 1: 5000 - 1: 20000

Not yet tested in other applications.

Images



Western blot analysis of lysates from U2OS cells, primary antibody was diluted at 1:1000, 4°C overnight

Storage

-20°C for 1 year