

SRTD1 Polyclonal Antibody

Description

Product type	Primary Antibody
Code	BT-AP14488
Host	Rabbit
Isotype	IgG
Size	20ul, 50ul, 100ul
Immunogen	Synthesized peptide derived from part region of human protein
Mol wt	N/A
Species reactivity	Human, Rat, Mouse
Clonality	Polyclonal
Recommended application	WB, ELISA
Concentration	1 mg/ml
Full name	SERTA domain-containing protein 1
Synonyms	SERTA domain-containing protein 1 ;CDK4-binding protein p34SEI1;SEI-1;Transcriptional regulator interacting with the PHD-bromodomain 1;TRIP-Br1

This product is for research use only, not for use in human, therapeutic or diagnostic procedure.

Background

Acts at E2F-responsive promoters to integrate signals provided by PHD- and/or bromodomain-containing transcription factors. Stimulates E2F-1/DP-1 transcriptional activity. Renders the activity of cyclin D1/CDK4 resistant to the inhibitory effects of p16(INK4a).,Contains 1 SERTA domain.,subunit:Interacts with the PHD-bromodomain of TIF1, TRIM28/TIF1B and p300/CBP. Binds to DP1. Also interacts with CDK4.,

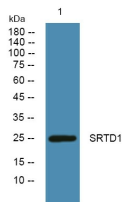
Recommended Dilution

WB: 1: 500 - 1: 2000

ELISA: 1: 5000 - 1: 20000

Not yet tested in other applications.

Images



Western blot analysis of lysates from KB cells, primary antibody was diluted at 1:1000, 4°C overnight

Storage

-20°C for 1 year