

SSRG Polyclonal Antibody

Description

Product type	Primary Antibody
Code	BT-AP14501
Host	Rabbit
Isotype	IgG
Size	20ul, 50ul, 100ul
Immunogen	Synthesized peptide derived from part region of human protein
Mol wt	N/A
Species reactivity	Human, Mouse, Rat
Clonality	Polyclonal
Recommended application	WB, ELISA
Concentration	1 mg/ml
Full name	Translocon-associated protein subunit gamma
Synonyms	Translocon-associated protein subunit gamma ;TRAP-gamma;Signal sequence receptor subunit gamma;SSR-gamma

This product is for research use only, not for use in human, therapeutic or diagnostic procedure.

Background

The signal sequence receptor (SSR) is a glycosylated endoplasmic reticulum (ER) membrane receptor associated with protein translocation across the ER membrane. The SSR is comprised of four membrane proteins/subunits: alpha, beta, gamma, and delta. The first two are glycosylated subunits and the latter two are non-glycosylated subunits. This gene encodes the gamma subunit, which is predicted to span the membrane four times.

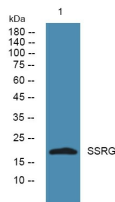
Recommended Dilution

WB: 1: 500 - 1: 2000

ELISA: 1: 5000 - 1: 20000

Not yet tested in other applications.

Images



Western blot analysis of lysates from SH-SY5Y cells, primary antibody was diluted at 1:1000, 4°C overnight

Storage

-20°C for 1 year