

c-Fos(Phospho Ser362) Polyclonal Antibody

Description

Product type	Primary Antibody
Code	BT-AP14525
Host	Rabbit
Isotype	IgG
Size	20ul, 50ul, 100ul
Immunogen	The antiserum was produced against synthesized peptide derived from human Fos around the phosphorylation site of Ser362. AA range:331-380
Mol wt	40695
Species reactivity	Human, Mouse, Rat
Clonality	Polyclonal
Recommended application	WB, IHC-p, IF, ELISA
Concentration	1 mg/ml
Full name	Proto-oncogene c-Fos
Synonyms	Proto-oncogene c-Fos; FOS; G0S7; Proto-oncogene c-Fos; Cellular oncogene fos; G0/G1 switch regulatory protein 7

This product is for research use only, not for use in human, therapeutic or diagnostic procedure.

Background

The Fos gene family consists of 4 members: FOS, FOSB, FOSL1, and FOSL2. These genes encode leucine zipper proteins that can dimerize with proteins of the JUN family, thereby forming the transcription factor complex AP-1. As such, the FOS proteins have been implicated as regulators of cell proliferation, differentiation, and transformation. In some cases, expression of the FOS gene has also been associated with apoptotic cell death.

Recommended Dilution

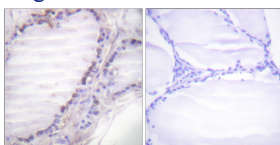
WB: 1: 500 - 1: 2000

IHC-p: 1: 100 - 1: 300

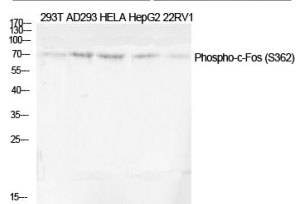
ELISA: 1: 10000

Not yet tested in other applications.

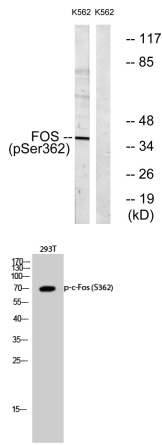
Images



Immunohistochemistry analysis of paraffin-embedded human thyroid gland, using Fos (Phospho-Ser362) Antibody. The picture on the right is blocked with the phospho peptide.



Western Blot analysis of various cells using Phospho-c-Fos (S362) Polyclonal Antibody diluted at 1:2000



Western Blot analysis of 293T cells using Phospho-c-Fos (S362) Polyclonal Antibody diluted at 1:2000

Western blot analysis of lysates from K562 cells treated with forskolin 40nM 30', using Fos (Phospho-Ser362) Antibody. The lane on the right is blocked with the phospho peptide.

Storage

-20°C for 1 year

501 Changsheng S Rd, Nanhu Dist, Jiaxing, Zhejiang, China

Tel: 86 21 31007137 | E-mail: save@bt-laboratory.com | www.bt-laboratory.com