

Stat3 Polyclonal Antibody

Description

Product type	Primary Antibody
Code	BT-AP14539
Host	Rabbit
Isotype	IgG
Size	20ul, 50ul, 100ul
Immunogen	Recombinant Protein of Stat3
Mol wt	N/A
Species reactivity	Human
Clonality	Polyclonal
Recommended application	WB, IHC-p, IF
Concentration	
Full name	Signal transducer and activator of transcription 3
Synonyms	Signal transducer and activator of transcription 3; STAT3; APRF; Signal transducer and activator of transcription 3; Acute-phase response factor

This product is for research use only, not for use in human, therapeutic or diagnostic procedure.

Background

The protein encoded by this gene is a member of the STAT protein family. In response to cytokines and growth factors, STAT family members are phosphorylated by the receptor associated kinases, and then form homo- or heterodimers that translocate to the cell nucleus where they act as transcription activators. This protein is activated through phosphorylation in response to various cytokines and growth factors including IFNs, EGF, IL5, IL6, HGF, LIF and BMP2. This protein mediates the expression of a variety of genes in response to cell stimuli, and thus plays a key role in many cellular processes such as cell growth and apoptosis. The small GTPase Rac1 has been shown to bind and regulate the activity of this protein. PIAS3 protein is a specific inhibitor of this protein. Mutations in this gene are associated with infantile-onset multisystem autoimmune disease and hyper

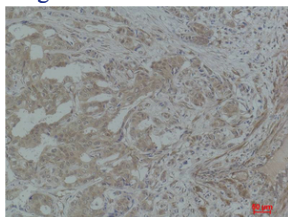
Recommended Dilution

WB: 1: 1000 - 1: 2000

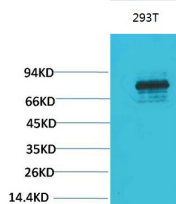
IHC: 1: 200 - 1: 500

Not yet tested in other applications.

Images



Immunohistochemical analysis of paraffin-embedded Human Breast Carcinoma using Stat3 Polyclonal Antibody.



Western blot analysis of 293T using Stat3 Polyclonal Antibody. Secondary antibody was diluted at 1:20000

Storage

-20°C for 1 year

501 Changsheng S Rd, Nanhu Dist, Jiaxing, Zhejiang, China

Tel: 86 21 31007137 | E-mail: save@bt-laboratory.com | www.bt-laboratory.com