

Stat4 Polyclonal Antibody

Description

Product type	Primary Antibody
Code	BT-AP14541
Host	Rabbit
Isotype	IgG
Size	20ul, 50ul, 100ul
Immunogen	Synthesized peptide derived from human Stat4 around the non-phosphorylation site of Y693.
Mol wt	N/A
Species reactivity	Human
Clonality	Polyclonal
Recommended application	WB, IHC-p, IF
Concentration	N/A
Full name	Signal transducer and activator of transcription 4
Synonyms	Signal transducer and activator of transcription 4; STAT4; Signal transducer and activator of transcription 4

This product is for research use only, not for use in human, therapeutic or diagnostic procedure.

Background

The protein encoded by this gene is a member of the STAT family of transcription factors. In response to cytokines and growth factors, STAT family members are phosphorylated by the receptor associated kinases, and then form homo- or heterodimers that translocate to the cell nucleus where they act as transcription activators. This protein is essential for mediating responses to IL12 in lymphocytes, and regulating the differentiation of T helper cells. Mutations in this gene may be associated with systemic lupus erythematosus and rheumatoid arthritis. Alternate splicing results in multiple transcript variants that encode the same protein.

Recommended Dilution

WB: 1: 500 - 1: 2000

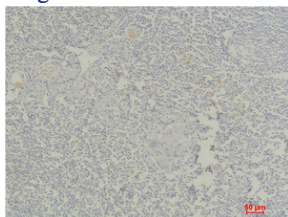
IP: 2 - 5 ug: mg

IHC-p: 1: 100 - 1: 300

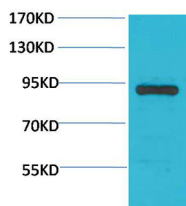
ELISA: 1: 5000

Not yet tested in other applications.

Images



Immunohistochemical analysis of paraffin-embedded Human Tonsil Tissue using Stat4 Polyclonal Antibody.



Western blot analysis of HeLa using Stat4 Polyclonal Antibody. Secondary antibody was diluted at 1:20000

Storage

-20°C for 1 year

501 Changsheng S Rd, Nanhu Dist, Jiaxing, Zhejiang, China

Tel: 86 21 31007137 | E-mail: save@bt-laboratory.com | www.bt-laboratory.com