

STAT5b Polyclonal Antibody

Description

Product type	Primary Antibody
Code	BT-AP14555
Host	Rabbit
Isotype	IgG
Size	20ul, 50ul, 100ul
Immunogen	Recombinant Protein of STAT5b
Mol wt	N/A
Species reactivity	Human, Rat, Mouse
Clonality	Polyclonal
Recommended application	WB, IHC-p, IF
Concentration	1 mg/ml
Full name	Signal transducer and activator of transcription 5B
Synonyms	Signal transducer and activator of transcription 5B; Signal transducer and activator of transcription 5B

This product is for research use only, not for use in human, therapeutic or diagnostic procedure.

Background

The protein encoded by this gene is a member of the STAT family of transcription factors. In response to cytokines and growth factors, STAT family members are phosphorylated by the receptor associated kinases, and then form homo- or heterodimers that translocate to the cell nucleus where they act as transcription activators. This protein mediates the signal transduction triggered by various cell ligands, such as IL2, IL4, CSF1, and different growth hormones. It has been shown to be involved in diverse biological processes, such as TCR signaling, apoptosis, adult mammary gland development, and sexual dimorphism of liver gene expression. This gene was found to fuse to retinoic acid receptor-alpha (RARA) gene in a small subset of acute promyelocytic leukemias (APLL). The dysregulation of the signaling pathways mediated by this protein may be the cause of the APLL.

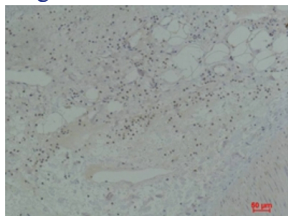
Recommended Dilution

WB: 1: 500 - 1: 2000

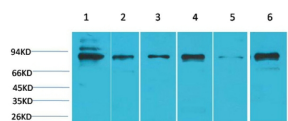
IHC: 1: 50 - 1: 200

Not yet tested in other applications.

Images



Immunohistochemical analysis of paraffin-embedded Human Spleen Tissue using STAT5bRabbit pAb diluted at 1:200.



Western blot analysis of 1) K562, 2) HeLa, 3) 3T3, 4) Mouse Heart Tissue, 5) PC12, 6) Rat Heart Tissue with STAT5bRabbit pAb diluted at 1:2,000.

Storage

-20°C for 1 year

501 Changsheng S Rd, Nanhu Dist, Jiaxing, Zhejiang, China
Tel: 86 21 31007137 | E-mail: save@bt-laboratory.com | www.bt-laboratory.com