

STK25 Polyclonal Antibody

Description

Product type	Primary Antibody
Code	BT-AP14565
Host	Rabbit
Isotype	IgG
Size	20ul, 50ul, 100ul
Immunogen	Synthesized peptide derived from human protein . at AA range: 170-250
Mol wt	N/A
Species reactivity	Human, Mouse
Clonality	Polyclonal
Recommended application	WB, ELISA
Concentration	1 mg/ml
Full name	Serine/threonine-protein kinase 25
Synonyms	Serine/threonine-protein kinase 25 ;EC 2.7.11.1;Ste20-like kinase;Sterile 20/oxidant stress-response kinase 1;SOK-1;Ste20/oxidant stress response kinase 1

This product is for research use only, not for use in human, therapeutic or diagnostic procedure.

Background

This gene encodes a member of the germinal centre kinase III (GCK III) subfamily of the sterile 20 superfamily of kinases. The encoded enzyme plays a role in serine-threonine liver kinase B1 (LKB1) signaling pathway to regulate neuronal polarization and morphology of the Golgi apparatus. The protein is translocated from the Golgi apparatus to the nucleus in response to chemical anoxia and plays a role in regulation of cell death. A pseudogene associated with this gene is located on chromosome 18. Multiple alternatively spliced transcript variants have been observed for this gene.

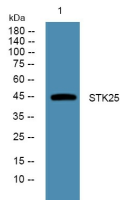
Recommended Dilution

WB: 1: 500 - 1: 2000

ELISA: 1: 5000 - 1: 20000

Not yet tested in other applications.

Images



Western blot analysis of lysates from DU145 cells, primary antibody was diluted at 1:1000, 4°C overnight

Storage

-20°C for 1 year