

C1RL Polyclonal Antibody

Description

Product type	Primary Antibody
Code	BT-AP14570
Host	Rabbit
Isotype	IgG
Size	20ul, 50ul, 100ul
Immunogen	Synthesized peptide derived from human C1RL. at AA range: 371-420
Mol wt	N/A
Species reactivity	Human, Rat, Mouse
Clonality	Polyclonal
Recommended application	WB, ELISA
Concentration	1 mg/ml
Full name	C1RL
Synonyms	C1RL; Complement C1r subcomponent-like protein; C1r-LP; C1r-like protein; EC 3.4.21.-; C1r-like serine protease analog protein; CLSPa

This product is for research use only, not for use in human, therapeutic or diagnostic procedure.

Background

Does not associate with the C1 complex. According to PubMed:15385675 doesn't cleave the proform of complement C1s.,Mediates the proteolytic cleavage of HP/haptoglobin in the endoplasmic reticulum.,induction:Up-regulated in monocytes and dendritic cells (DC) undergoing maturation or activation.,Belongs to the peptidase S1 family.,Contains 1 CUB domain.,Contains 1 peptidase S1 domain.,tissue specificity:Highly expressed in placenta, liver, kidney, pancreas, moderately in lung, spleen, prostate, ovary, colon, and PBL, and weakly in heart, skeletal muscle, thymus, testis, and small intestine. Expressed in PC-3 (prostate adenocarcinoma) and SK-OV-3 (ovary adenocarcinoma) cells, but not in LoVo and HT-29 (colon adenocarcinoma), SMMC7721 (hepatocellular carcinoma), CaoV-3 (ovary adenocarcinoma), HeLa (cervix epithelioid carcinoma), MCF-7 (breast adenocarcinoma), U251 (glioma) or A549 (lung carcinoma) cells. Widely expressed in myeloid leukemia cell lines, including K-562 (chronic myelogenous leukemia), THP-1 (myelomonocytic leukemia), HL-60 and NB4 (promyelocytic leukemia), and KG-1 (acute myelogenous leukemia) cells. Expressed mainly in the liver and in serum (at protein level),

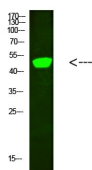
Recommended Dilution

WB: 1: 500 - 1: 2000

ELISA: 1: 10000 - 1: 20000

Not yet tested in other applications.

Images



Western Blot analysis of hela cells using primary antibody diluted at 1:500(4°C overnight). Secondary antibody:Goat Anti-rabbit IgG IRDye 800(diluted at 1:5000, 25°C, 1 hour)

Storage

-20°C for 1 year

501 Changsheng S Rd, Nanhu Dist, Jiaxing, Zhejiang, China

Tel: 86 21 31007137 | E-mail: save@bt-laboratory.com | www.bt-laboratory.com