

STK40 Polyclonal Antibody

Description

Product type	Primary Antibody
Code	BT-AP14573
Host	Rabbit
Isotype	IgG
Size	20ul, 50ul, 100ul
Immunogen	Synthesized peptide derived from human protein . at AA range: 30-110
Mol wt	N/A
Species reactivity	Human, Rat, Mouse
Clonality	Polyclonal
Recommended application	WB, ELISA
Concentration	1 mg/ml
Full name	Serine/threonine-protein kinase 40
Synonyms	Serine/threonine-protein kinase 40 ;EC 2.7.11.1;SINK-homologous serine/threonine-protein kinase;Sugen kinase 495;SgK495

This product is for research use only, not for use in human, therapeutic or diagnostic procedure.

Background

Catalytic activity:ATP + a protein = ADP + a phosphoprotein.,May be a negative regulator of NF-kappa-B and p53-mediated gene transcription.,Belongs to the protein kinase superfamily. CAMK Ser/Thr protein kinase family.,Contains 1 protein kinase domain.,tissue specificity:Strongly expressed in heart, brain, placenta, lung, skeletal muscle, kidney, spleen, thymus, prostate, liver, pancreas, testis, ovary, small intestine, colon and peripheral blood leukocytes.,

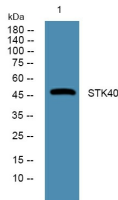
Recommended Dilution

WB: 1: 500 - 1: 2000

ELISA: 1: 5000 - 1: 20000

Not yet tested in other applications.

Images



Western blot analysis of lysates from A431 cells, primary antibody was diluted at 1:1000, 4°C overnight

Storage

-20°C for 1 year