

STP2 Polyclonal Antibody

Description

Product type	Primary Antibody
Code	BT-AP14575
Host	Rabbit
Isotype	IgG
Size	20ul, 50ul, 100ul
Immunogen	Synthesized peptide derived from human protein . at AA range: 70-150
Mol wt	N/A
Species reactivity	Human, Rat, Mouse
Clonality	Polyclonal
Recommended application	WB, ELISA
Concentration	1 mg/ml
Full name	Nuclear transition protein 2
Synonyms	Nuclear transition protein 2 ;TP-2;TP2

This product is for research use only, not for use in human, therapeutic or diagnostic procedure.

Background

In the elongating spermatids of mammals, the conversion of nucleosomal chromatin to the compact, non-nucleosomal form found in the sperm nucleus is associated with the appearance of a small set of basic chromosomal transition proteins.,Belongs to the nuclear transition protein 2 family.,tissue specificity:Testis.,

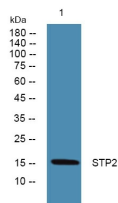
Recommended Dilution

WB: 1: 500 - 1: 2000

ELISA: 1: 5000 - 1: 20000

Not yet tested in other applications.

Images



Western blot analysis of lysates from A431 cells, primary antibody was diluted at 1:1000, 4°C overnight

Storage

-20°C for 1 year