

CACNB3 Polyclonal Antibody

Description

Product type	Primary Antibody
Code	BT-AP14600
Host	Rabbit
Isotype	IgG
Size	20ul, 50ul, 100ul
Immunogen	Synthetic Peptide of CACNB3
Mol wt	N/A
Species reactivity	Mouse, Rat
Clonality	Polyclonal
Recommended application	WB, IHC-p, IF
Concentration	
Full name	Voltage-dependent L-type calcium channel subunit beta-3
Synonyms	Voltage-dependent L-type calcium channel subunit beta-3; CACNB3; CACNLB3; Voltage-dependent L-type calcium channel subunit beta-3; CAB3; Calcium channel voltage-dependent subunit beta 3

This product is for research use only, not for use in human, therapeutic or diagnostic procedure.

Background

This gene encodes a regulatory beta subunit of the voltage-dependent calcium channel. Beta subunits are composed of five domains, which contribute to the regulation of surface expression and gating of calcium channels and may also play a role in the regulation of transcription factors and calcium transport.

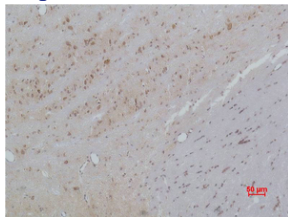
Recommended Dilution

WB: 1: 500 - 1: 1000

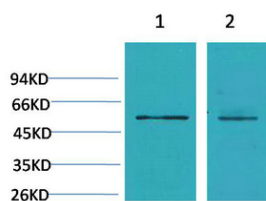
IHC: 1: 200 - 1: 500

Not yet tested in other applications.

Images



Immunohistochemical analysis of paraffin-embedded Rat Brain Tissue using CACNB3 Polyclonal Antibody.



Western blot analysis of 1) Mouse Brain Tissue, 2) Rat Brain Tissue using CACNB3 Polyclonal Antibody. Secondary antibody was diluted at 1:20000

Storage

-20°C for 1 year

501 Changsheng S Rd, Nanhu Dist, Jiaxing, Zhejiang, China

Tel: 86 21 31007137 | E-mail: save@bt-laboratory.com | www.bt-laboratory.com