

CALCA Polyclonal Antibody

Description

Product type	Primary Antibody
Code	BT-AP14615
Host	Rabbit
Isotype	IgG
Size	20ul, 50ul, 100ul
Immunogen	Synthesized peptide derived from human protein . at AA range: 71-120
Mol wt	N/A
Species reactivity	Human, Mouse, Rat
Clonality	Polyclonal
Recommended application	WB, ELISA
Concentration	1 mg/ml
Full name	Calcitonin gene-related peptide 1
Synonyms	Calcitonin gene-related peptide 1 ;Alpha-type CGRP;Calcitonin gene-related peptide I;CGRP-I

This product is for research use only, not for use in human, therapeutic or diagnostic procedure.

Background

CALCA encodes the peptide hormones calcitonin, calcitonin gene-related peptide and katacalcin by tissue-specific alternative RNA splicing of the gene transcripts and cleavage of inactive precursor proteins. Calcitonin is involved in calcium regulation and acts to regulate phosphorus metabolism. Calcitonin gene-related peptide functions as a vasodilator and as an antimicrobial peptide while katacalcin is a calcium-lowering peptide. Multiple transcript variants encoding different isoforms have been found for CALCA.

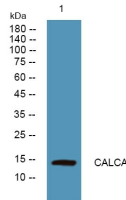
Recommended Dilution

WB: 1: 500 - 1: 2000

ELISA: 1: 5000 - 1: 20000

Not yet tested in other applications.

Images



Western blot analysis of lysates from U2OS cells, primary antibody was diluted at 1:1000, 4°C overnight

Storage

-20°C for 1 year