

Synapsin I(Phospho Ser9) Polyclonal Antibody

Description

| | |
|--------------------------------|---|
| Product type | Primary Antibody |
| Code | BT-AP14622 |
| Host | Rabbit |
| Isotype | IgG |
| Size | 20ul, 50ul, 100ul |
| Immunogen | The antiserum was produced against synthesized peptide derived from human Synapsin around the phosphorylation site of Ser9. AA range:3-52 |
| Mol wt | 73988 |
| Species reactivity | Human, Mouse, Rat |
| Clonality | Polyclonal |
| Recommended application | WB, IHC-p, IF, ICC, ELISA |
| Concentration | 1 mg/ml |
| Full name | Synapsin-1 |
| Synonyms | Synapsin-1; SYN1; Synapsin-1; Brain protein 4.1; Synapsin I |

This product is for research use only, not for use in human, therapeutic or diagnostic procedure.

Background

This gene is a member of the synapsin gene family. Synapsins encode neuronal phosphoproteins which associate with the cytoplasmic surface of synaptic vesicles. Family members are characterized by common protein domains, and they are implicated in synaptogenesis and the modulation of neurotransmitter release, suggesting a potential role in several neuropsychiatric diseases. This member of the synapsin family plays a role in regulation of axonogenesis and synaptogenesis. The protein encoded serves as a substrate for several different protein kinases and phosphorylation may function in the regulation of this protein in the nerve terminal. Mutations in this gene may be associated with X-linked disorders with primary neuronal degeneration such as Rett syndrome. Alternatively spliced transcript variants encoding different isoforms have been identified.

Recommended Dilution

WB: 1: 500 - 1: 2000

IHC-p: 1: 100 - 1: 300

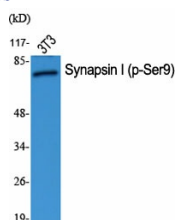
IF: 1: 200 - 1: 1000

ICC: 1: 200 - 1: 1000

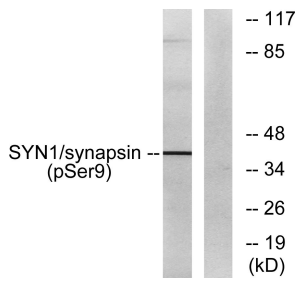
ELISA: 1: 20000

Not yet tested in other applications.

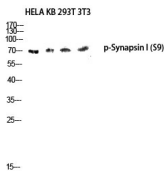
Images



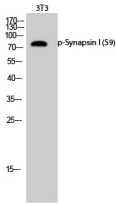
Western Blot analysis of various cells using Phospho-Synapsin I (S9) Polyclonal Antibody diluted at 1:1000



Western Blot analysis of 3T3 cells using Phospho-Synapsin I (S9) Polyclonal Antibody diluted at 1:1000



Western blot analysis of HELA KB 293T 3T3 lysis using Phospho-Synapsin I (S9) antibody. Antibody was diluted at 1:1000



Western blot analysis of lysates from 293 cells treated with PMA 200nM 30', using Synapsin (Phospho-Ser9) Antibody. The lane on the right is blocked with the phospho peptide.

Storage

-20°C for 1 year

501 Changsheng S Rd, Nanhu Dist, Jiaxing, Zhejiang, China

Tel: 86 21 31007137 | E-mail: save@bt-laboratory.com | www.bt-laboratory.com