

CALL3 Polyclonal Antibody

Description

Product type	Primary Antibody
Code	BT-AP14623
Host	Rabbit
Isotype	IgG
Size	20ul, 50ul, 100ul
Immunogen	Synthesized peptide derived from part region of human protein
Mol wt	N/A
Species reactivity	Human, Mouse, Rat
Clonality	Polyclonal
Recommended application	WB, ELISA
Concentration	1 mg/ml
Full name	Calmodulin-like protein 3
Synonyms	Calmodulin-like protein 3 ;CaM-like protein;CLP;Calmodulin-related protein NB-1

This product is for research use only, not for use in human, therapeutic or diagnostic procedure.

Background

May be similar to that of authentic calmodulin and may actually compete with calmodulin by binding, with different affinities, to cellular substrates.,induction:By human beta type transforming growth factor.,miscellaneous:Binds four calcium ions.,Belongs to the calmodulin family.,Contains 4 EF-hand domains.,tissue specificity:Expressed in normal mammary, prostate, cervical, and epidermal tissues. It is greatly reduced or undetectable in transformed cells.,

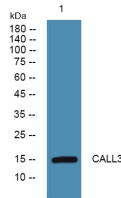
Recommended Dilution

WB: 1: 500 - 1: 2000

ELISA: 1: 5000 - 1: 20000

Not yet tested in other applications.

Images



Western blot analysis of lysates from PC12 cells, primary antibody was diluted at 1:1000, 4°C overnight

Storage

-20°C for 1 year