

SYT15 Polyclonal Antibody

Description

Product type	Primary Antibody
Code	BT-AP14655
Host	Rabbit
Isotype	IgG
Size	20ul, 50ul, 100ul
Immunogen	Synthesized peptide derived from part region of human protein
Mol wt	N/A
Species reactivity	Human, Rat, Mouse
Clonality	Polyclonal
Recommended application	WB, ELISA
Concentration	1 mg/ml
Full name	Synaptotagmin-15
Synonyms	Synaptotagmin-15 ;Chr10Syt;Synaptotagmin XV;SytXV

This product is for research use only, not for use in human, therapeutic or diagnostic procedure.

Background

This gene encodes a member of the Synaptotagmin (Syt) family of membrane trafficking proteins. Members of this family contain a transmembrane region and a C-terminal-type tandem C2 domain. Unlike related family members, the encoded protein may be involved in membrane trafficking in non-neuronal tissues. Two transcript variants encoding distinct isoforms have been identified for this gene.

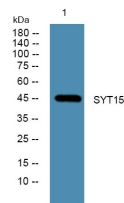
Recommended Dilution

WB: 1: 500 - 1: 2000

ELISA: 1: 5000 - 1: 20000

Not yet tested in other applications.

Images



Western blot analysis of lysates from SH-SY5Y cells, primary antibody was diluted at 1:1000, 4°C overnight

Storage

-20°C for 1 year