

SYT4 Polyclonal Antibody

Description

Product type	Primary Antibody
Code	BT-AP14658
Host	Rabbit
Isotype	IgG
Size	20ul, 50ul, 100ul
Immunogen	Synthesized peptide derived from part region of human protein
Mol wt	N/A
Species reactivity	Human, Rat, Mouse
Clonality	Polyclonal
Recommended application	WB, ELISA
Concentration	1 mg/ml
Full name	Synaptotagmin-4
Synonyms	Synaptotagmin-4 ;Synaptotagmin IV;SytIV

This product is for research use only, not for use in human, therapeutic or diagnostic procedure.

Background

cofactor: Binds 3 calcium ions per subunit. The ions are bound to the C2 domains. May be involved in Ca(2+)-dependent exocytosis of secretory vesicles through Ca(2+) and phospholipid binding to the C2 domain or may serve as Ca(2+) sensors in the process of vesicular trafficking and exocytosis. Belongs to the synaptotagmin family. Contains 2 C2 domains. tissue specificity: Expressed in brain. Within brain, expression is highest in hippocampus, with substantial levels also detected in amygdala and thalamus.

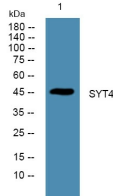
Recommended Dilution

WB: 1: 500 - 1: 2000

ELISA: 1: 5000 - 1: 20000

Not yet tested in other applications.

Images



Western blot analysis of lysates from DU145 cells, primary antibody was diluted at 1:1000, 4°C overnight

Storage

-20°C for 1 year