

SYT5 Polyclonal Antibody

Description

Product type	Primary Antibody
Code	BT-AP14659
Host	Rabbit
Isotype	IgG
Size	20ul, 50ul, 100ul
Immunogen	Synthesized peptide derived from part region of human protein
Mol wt	N/A
Species reactivity	Human, Rat, Mouse
Clonality	Polyclonal
Recommended application	WB, ELISA
Concentration	1 mg/ml
Full name	Synaptotagmin-5
Synonyms	Synaptotagmin-5 ;Synaptotagmin V;SytV

This product is for research use only, not for use in human, therapeutic or diagnostic procedure.

Background

Synaptotagmins, such as SYT5, are a family of type III membrane proteins characterized by cytoplasmic repeats related to protein kinase C (see MIM 176960) regulatory (C2) domains, which are thought to bind calcium. Synaptotagmins may act both as negative regulators of vesicle fusion, allowing fusion in the presence of calcium, and as calcium receptors or sensor molecules (summary by Hudson and Birnbaum, 1995

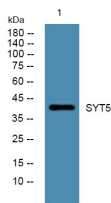
Recommended Dilution

WB: 1: 500 - 1: 2000

ELISA: 1: 5000 - 1: 20000

Not yet tested in other applications.

Images



Western blot analysis of lysates from PC12 cells, primary antibody was diluted at 1:1000, 4°C overnight

Storage

-20°C for 1 year