

SYT8 Polyclonal Antibody

Description

Product type	Primary Antibody
Code	BT-AP14661
Host	Rabbit
Isotype	IgG
Size	20ul, 50ul, 100ul
Immunogen	Synthesized peptide derived from part region of human protein
Mol wt	N/A
Species reactivity	Human, Rat, Mouse
Clonality	Polyclonal
Recommended application	WB, ELISA
Concentration	1 mg/ml
Full name	Synaptotagmin-8
Synonyms	Synaptotagmin-8 ;Synaptotagmin VIII;SytVIII

This product is for research use only, not for use in human, therapeutic or diagnostic procedure.

Background

This gene encodes a member of the synaptotagmin protein family. Synaptotagmins are membrane proteins that are important in neurotransmission and hormone secretion, both of which involve regulated exocytosis. Expression of the encoded protein in human pancreatic islets has been connected to activity of the promoter for the insulin gene, on the same chromosome several hundred kilobases away (PMID: 21336277 and 22928559). This association would link response to glucose to insulin secretion. Alternative splicing results in multiple transcript variants encoding different isoforms.

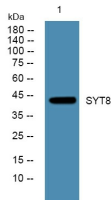
Recommended Dilution

WB: 1: 500 - 1: 2000

ELISA: 1: 5000 - 1: 20000

Not yet tested in other applications.

Images



Western blot analysis of lysates from A431 cells, primary antibody was diluted at 1:1000, 4°C overnight

Storage

-20°C for 1 year