

Catenin-beta Polyclonal Antibody

Description

Product type	Primary Antibody
Code	BT-AP14693
Host	Rabbit
Isotype	IgG
Size	20ul, 50ul, 100ul
Immunogen	The antiserum was produced against synthesized peptide derived from human Catenin-beta. AA range:17-66
Mol wt	85497
Species reactivity	Human, Mouse, Rat, Monkey
Clonality	Polyclonal
Recommended application	WB, IHC-p, IF, ICC, ELISA
Concentration	1 mg/ml
Full name	Catenin beta-1
Synonyms	Catenin beta-1; CTNNB1; CTNNB; OK/SW-cl.35; Catenin beta-1; Beta-catenin

This product is for research use only, not for use in human, therapeutic or diagnostic procedure.

Background

The protein encoded by this gene is part of a complex of proteins that constitute adherens junctions (AJs). AJs are necessary for the creation and maintenance of epithelial cell layers by regulating cell growth and adhesion between cells. The encoded protein also anchors the actin cytoskeleton and may be responsible for transmitting the contact inhibition signal that causes cells to stop dividing once the epithelial sheet is complete. Finally, this protein binds to the product of the APC gene, which is mutated in adenomatous polyposis of the colon. Mutations in this gene are a cause of colorectal cancer (CRC), pilomatixoma (PTR), medulloblastoma (MDB), and ovarian cancer. Alternative splicing results in multiple transcript variants.

Recommended Dilution

WB: 1: 500 - 1: 2000

IHC-p: 1: 100 - 1: 300

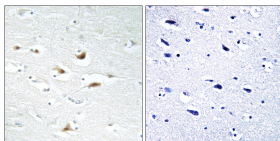
IF: 1: 200 - 1: 1000

ICC: 1: 200 - 1: 1000

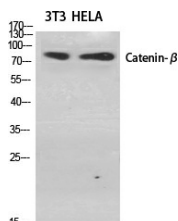
ELISA: 1: 20000

Not yet tested in other applications.

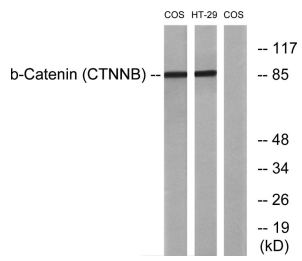
Images



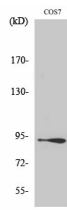
Immunohistochemistry analysis of paraffin-embedded human brain tissue, using Catenin-beta Antibody. The picture on the right is blocked with the synthesized peptide.



Western Blot analysis of various cells using Catenin-β Polyclonal Antibody diluted at 1:2000



Western Blot analysis of COS7 cells using Catenin-β Polyclonal Antibody diluted at 1:2000



Western blot analysis of lysates from COS7 and HT-29 cells, using Catenin-beta Antibody. The lane on the right is blocked with the synthesized peptide.

Storage

-20°C for 1 year

501 Changsheng S Rd, Nanhu Dist, Jiaxing, Zhejiang, China

Tel: 86 21 31007137 | E-mail: save@bt-laboratory.com | www.bt-laboratory.com