

TAAR2 Polyclonal Antibody

Description

Product type	Primary Antibody
Code	BT-AP14700
Host	Rabbit
Isotype	IgG
Size	20ul, 50ul, 100ul
Immunogen	Synthesized peptide derived from human protein . at AA range: 10-90
Mol wt	N/A
Species reactivity	Human, Rat, Mouse
Clonality	Polyclonal
Recommended application	WB, ELISA
Concentration	1 mg/ml
Full name	Trace amine-associated receptor 2
Synonyms	Trace amine-associated receptor 2 ;TaR-2;Trace amine receptor 2;G-protein coupled receptor 58

This product is for research use only, not for use in human, therapeutic or diagnostic procedure.

Background

Orphan receptor.,Belongs to the G-protein coupled receptor 1 family.,tissue specificity:Not expressed in the pons, thalamus, hypothalamus, hippocampus, caudate, putamen, frontal cortex, basal forebrain, midbrain or liver.,

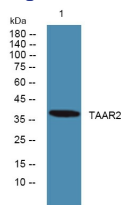
Recommended Dilution

WB: 1: 500 - 1: 2000

ELISA: 1: 5000 - 1: 20000

Not yet tested in other applications.

Images



Western blot analysis of lysates from PC12 cells, primary antibody was diluted at 1:1000, 4°C overnight

Storage

-20°C for 1 year