

TAAR6 Polyclonal Antibody

Description

Product type	Primary Antibody
Code	BT-AP14703
Host	Rabbit
Isotype	IgG
Size	20ul, 50ul, 100ul
Immunogen	Synthesized peptide derived from human protein . at AA range: 190-270
Mol wt	N/A
Species reactivity	Human, Rat, Mouse
Clonality	Polyclonal
Recommended application	WB, ELISA
Concentration	1 mg/ml
Full name	Trace amine-associated receptor 6
Synonyms	Trace amine-associated receptor 6 ;TaR-6;Trace amine receptor 6;Trace amine receptor 4;TaR-4

This product is for research use only, not for use in human, therapeutic or diagnostic procedure.

Background

This gene encodes a seven-transmembrane G-protein-coupled receptor that likely functions as a receptor for endogenous trace amines. Mutations in this gene may be associated with schizophrenia.

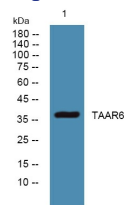
Recommended Dilution

WB: 1: 500 - 1: 2000

ELISA: 1: 5000 - 1: 20000

Not yet tested in other applications.

Images



Western blot analysis of lysates from SH-SY5Y cells, primary antibody was diluted at 1:1000, 4°C overnight

Storage

-20°C for 1 year