

Caveolin-1(Phospho Tyr14) Polyclonal Antibody

Description

Product type	Primary Antibody
Code	BT-AP14711
Host	Rabbit
Isotype	IgG
Size	20ul, 50ul, 100ul
Immunogen	The antiserum was produced against synthesized peptide derived from human Caveolin-1 around the phosphorylation site of Tyr14. AA range:5-54
Mol wt	20472
Species reactivity	Human, Mouse, Rat
Clonality	Polyclonal
Recommended application	WB, ELISA
Concentration	1 mg/ml
Full name	Caveolin-1
Synonyms	Caveolin-1; CAV1; CAV; Caveolin-1

This product is for research use only, not for use in human, therapeutic or diagnostic procedure.

Background

The scaffolding protein encoded by this gene is the main component of the caveolae plasma membranes found in most cell types. The protein links integrin subunits to the tyrosine kinase FYN, an initiating step in coupling integrins to the Ras-ERK pathway and promoting cell cycle progression. The gene is a tumor suppressor gene candidate and a negative regulator of the Ras-p42/44 mitogen-activated kinase cascade. Caveolin 1 and caveolin 2 are located next to each other on chromosome 7 and express colocalizing proteins that form a stable hetero-oligomeric complex. Mutations in this gene have been associated with Berardinelli-Seip congenital lipodystrophy. Alternatively spliced transcripts encode alpha and beta isoforms of caveolin 1.

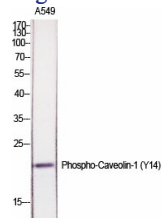
Recommended Dilution

WB: 1: 500 - 1: 2000

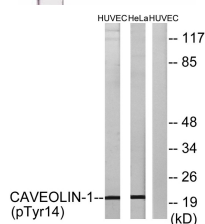
ELISA: 1: 20000

Not yet tested in other applications.

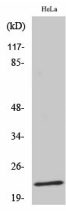
Images



Western Blot analysis of various cells using Phospho-Caveolin-1 (Y14) Polyclonal Antibody diluted at 1:1000



Western Blot analysis of HeLa cells using Phospho-Caveolin-1 (Y14) Polyclonal Antibody diluted at 1:1000



Western blot analysis of lysates from HUVEC cells treated with PMA 125ng/ml 30' and HeLa cells treated with LPS 100ng/ml 30', using Caveolin-1 (Phospho-Tyr14) Antibody. The lane on the right is blocked with the phospho peptide.

Storage

-20°C for 1 year

501 Changsheng S Rd, Nanhu Dist, Jiaxing, Zhejiang, China

Tel: 86 21 31007137 | E-mail: save@bt-laboratory.com | www.bt-laboratory.com