

CCKBR Polyclonal Antibody

Description

Product type	Primary Antibody
Code	BT-AP14745
Host	Rabbit
Isotype	IgG
Size	20ul, 50ul, 100ul
Immunogen	Synthetic Peptide of CCKBR
Mol wt	N/A
Species reactivity	Human, Rat, Mouse
Clonality	Polyclonal
Recommended application	WB
Concentration	1 mg/ml
Full name	Gastrin/cholecystokinin type B receptor
Synonyms	Gastrin/cholecystokinin type B receptor ;CCK-B receptor;CCK-BR;Cholecystokinin-2 receptor;CCK2-R; CCKBR; CCKRB; Gastrin/cholecystokinin type B receptor; CCK-B receptor; CCK-BR; Cholecystokinin-2 receptor; CCK2-R

This product is for research use only, not for use in human, therapeutic or diagnostic procedure.

Background

This gene encodes a G-protein coupled receptor for gastrin and cholecystokinin (CCK), regulatory peptides of the brain and gastrointestinal tract. This protein is a type B gastrin receptor, which has a high affinity for both sulfated and nonsulfated CCK analogs and is found principally in the central nervous system and the gastrointestinal tract. Alternative splicing results in multiple transcript variants. A misspliced transcript variant including an intron has been observed in cells from colorectal and pancreatic tumors.

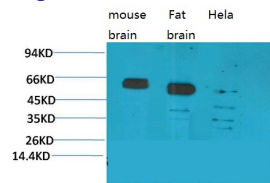
Recommended Dilution

WB: 1: 1000 - 1: 2000

ELISA: 1: 20000

Not yet tested in other applications.

Images



Western blot analysis of 1) Mouse Brain Tissue, 2)Rat Brain Tissue, 3)Human Brain Tissue, with CCKBR Rabbit pAb diluted at 1:2,000.

Storage

-20°C for 1 year