

TAM41 Polyclonal Antibody

Description

Product type	Primary Antibody
Code	BT-AP14746
Host	Rabbit
Isotype	IgG
Size	20ul, 50ul, 100ul
Immunogen	Synthesized peptide derived from human protein . at AA range: 220-300
Mol wt	N/A
Species reactivity	Human, Mouse
Clonality	Polyclonal
Recommended application	WB, ELISA
Concentration	1 mg/ml
Full name	Mitochondrial translocator assembly and maintenance protein 41 homolog
Synonyms	Mitochondrial translocator assembly and maintenance protein 41 homolog ;TAM41;MMP37-like protein, mitochondrial

This product is for research use only, not for use in human, therapeutic or diagnostic procedure.

Background

May be involved in the translocation of transit peptide-containing proteins across the mitochondrial inner membrane.,Belongs to the MMP37 family.,

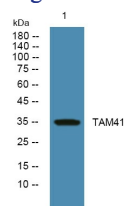
Recommended Dilution

WB: 1: 500 - 1: 2000

ELISA: 1: 5000 - 1: 20000

Not yet tested in other applications.

Images



Western blot analysis of lysates from SH-SY5Y cells, primary antibody was diluted at 1:1000, 4°C overnight

Storage

-20°C for 1 year