

CCL16 Polyclonal Antibody

Description

Product type	Primary Antibody
Code	BT-AP14752
Host	Rabbit
Isotype	IgG
Size	20ul, 50ul, 100ul
Immunogen	Synthesized peptide derived from human protein . at AA range: 10-90
Mol wt	N/A
Species reactivity	Human, Rat, Mouse
Clonality	Polyclonal
Recommended application	WB, ELISA
Concentration	1 mg/ml
Full name	C-C motif chemokine 16
Synonyms	C-C motif chemokine 16 ;Chemokine CC-4;HCC-4;Chemokine LEC;IL-10-inducible chemokine;LCC-1;Liver-expressed chemokine;Lymphocyte and monocyte chemoattractant;LMC;Monotactin-1;MTN-1;

This product is for research use only, not for use in human, therapeutic or diagnostic procedure.

Background

This gene is one of several cytokine genes clustered on the q-arm of chromosome 17. Cytokines are a family of secreted proteins involved in immunoregulatory and inflammatory processes. The CC cytokines are proteins characterized by two adjacent cysteines. The cytokine encoded by this gene displays chemotactic activity for lymphocytes and monocytes but not for neutrophils. This cytokine also shows a potent myelosuppressive activity and suppresses proliferation of myeloid progenitor cells. The expression of this gene is upregulated by IL-10.

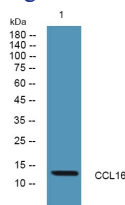
Recommended Dilution

WB: 1: 500 - 1: 2000

ELISA: 1: 5000 - 1: 20000

Not yet tested in other applications.

Images



Western blot analysis of lysates from Jarkat cells, primary antibody was diluted at 1:1000, 4°C overnight

Storage

-20°C for 1 year