

Tau(Phospho Ser519) Polyclonal Antibody

Description

Product type	Primary Antibody
Code	BT-AP14764
Host	Rabbit
Isotype	IgG
Size	20ul, 50ul, 100ul
Immunogen	The antiserum was produced against synthesized peptide derived from human Tau around the phosphorylation site of Ser519/202. AA range:266-315
Mol wt	78746
Species reactivity	Human, Mouse, Rat
Clonality	Polyclonal
Recommended application	WB, ELISA
Concentration	1 mg/ml
Full name	Microtubule-associated protein tau
Synonyms	Microtubule-associated protein tau; MAPT; MAPTL; MTBT1; TAU; Microtubule-associated protein tau; Neurofibrillary tangle protein; Paired helical filament-tau; PHF-tau

This product is for research use only, not for use in human, therapeutic or diagnostic procedure.

Background

This gene encodes the microtubule-associated protein tau (MAPT) whose transcript undergoes complex, regulated alternative splicing, giving rise to several mRNA species. MAPT transcripts are differentially expressed in the nervous system, depending on stage of neuronal maturation and neuron type. MAPT gene mutations have been associated with several neurodegenerative disorders such as Alzheimer's disease, Pick's disease, frontotemporal dementia, cortico-basal degeneration and progressive supranuclear palsy.

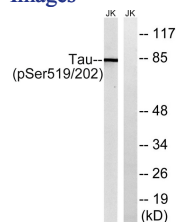
Recommended Dilution

WB: 1: 500 - 1: 2000

ELISA: 1: 10000

Not yet tested in other applications.

Images



Western blot analysis of lysates from Jurkat cells treated with H₂O₂ 100uM 30', using Tau (Phospho-Ser519/202) Antibody. The lane on the right is blocked with the phospho peptide.

Storage

-20°C for 1 year