

## CD108 Polyclonal Antibody

### Description

Product type	Primary Antibody
Code	BT-AP14787
Host	Rabbit
Isotype	IgG
Size	20ul, 50ul, 100ul
Immunogen	Synthetic peptide from human protein at AA range: 101-150
Mol wt	N/A
Species reactivity	Human, Mouse, Rat
Clonality	Polyclonal
Recommended application	IHC-p, IF, ELISA
Concentration	1 mg/ml
Full name	Semaphorin-7A
Synonyms	Semaphorin-7A ;CDw108;JMH blood group antigen;John-Milton-Hargen human blood group Ag;Semaphorin-K1;Sema K1;Semaphorin-L;Sema L;CD antigen CD108; Semaphorin-7A; CDw108; JMH blood group antigen; John-Milton-Hargen human blood group Ag; Semaphorin-K1; Sema K1; Semaphorin-L; Sema L; CD antigen CD108

**This product is for research use only, not for use in human, therapeutic or diagnostic procedure.**

### Background

This gene encodes a member of the semaphorin family of proteins. The encoded preproprotein is proteolytically processed to generate the mature glycosylphosphatidylinositol (GPI)-anchored membrane glycoprotein. The encoded protein is found on activated lymphocytes and erythrocytes and may be involved in immunomodulatory and neuronal processes. The encoded protein carries the John Milton Hagen (JMH) blood group antigens. Mutations in this gene may be associated with reduced bone mineral density (BMD). Alternative splicing results in multiple transcript variants, at least one of which encodes an isoform that is proteolytically processed.

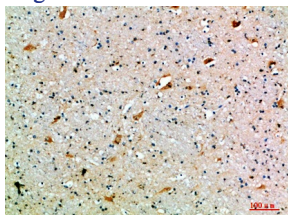
### Recommended Dilution

IHC-p: 1: 50 - 1: 200

ELISA: 1: 10000 - 1: 20000

Not yet tested in other applications.

### Images



Immunohistochemical analysis of paraffin-embedded human-brain, antibody was diluted at 1:200

### Storage

-20°C for 1 year