

## TBCB Polyclonal Antibody

### Description

<b>Product type</b>	Primary Antibody
<b>Code</b>	BT-AP14788
<b>Host</b>	Rabbit
<b>Isotype</b>	IgG
<b>Size</b>	20ul, 50ul, 100ul
<b>Immunogen</b>	Synthesized peptide derived from part region of human protein
<b>Mol wt</b>	N/A
<b>Species reactivity</b>	Human, Mouse
<b>Clonality</b>	Polyclonal
<b>Recommended application</b>	WB, ELISA
<b>Concentration</b>	1 mg/ml
<b>Full name</b>	Tubulin-folding cofactor B
<b>Synonyms</b>	Tubulin-folding cofactor B ;Cytoskeleton-associated protein 1;Cytoskeleton-associated protein CKAPI;Tubulin-specific chaperone B

**This product is for research use only, not for use in human, therapeutic or diagnostic procedure.**

### Background

Binds to alpha-tubulin folding intermediates after their interaction with cytosolic chaperonin in the pathway leading from newly synthesized tubulin to properly folded heterodimer. Involved in regulation of tubulin heterodimer dissociation. May function as a negative regulator of axonal growth.,PTM:Phosphorylation by PAK1 is required for normal function. Phosphorylated upon DNA damage, probably by ATM or ATR.,PTM:Ubiquitinated in the presence of GAN which targets it for degradation by the proteasome.,Belongs to the TBCB family.,Contains 1 CAP-Gly domain.,subcellular location:Colocalizes with microtubules. In differentiated neurons, located in the cytoplasm. In differentiating neurons, accumulates at the growth cone.,subunit:Supercomplex made of cofactors A to E. Cofactors A and D function by capturing and stabilizing tubulin in a quasi-native conformation. Cofactor E binds to the cofactor D-tubulin complex; interaction with cofactor C then causes the release of tubulin polypeptides that are committed to the native state. Cofactors B and E can form a heterodimer which binds to alpha-tubulin and enhances their ability to dissociate tubulin heterodimers. Binds to GAN.,tissue specificity:Found in most tissues.,

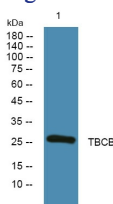
### Recommended Dilution

WB: 1: 500 - 1: 2000

ELISA: 1: 5000 - 1: 20000

Not yet tested in other applications.

### Images



Western blot analysis of lysates from SH-SY5Y cells, primary antibody was diluted at 1:1000, 4°C overnight

## Storage

-20°C for 1 year

501 Changsheng S Rd, Nanhu Dist, Jiaxing, Zhejiang, China

Tel: 86 21 31007137 | E-mail: [save@bt-laboratory.com](mailto:save@bt-laboratory.com) | [www.bt-laboratory.com](http://www.bt-laboratory.com)