

## TBP Polyclonal Antibody

### Description

<b>Product type</b>	Primary Antibody
<b>Code</b>	BT-AP14794
<b>Host</b>	Rabbit
<b>Isotype</b>	IgG
<b>Size</b>	20ul, 50ul, 100ul
<b>Immunogen</b>	Recombinant Protein of TBP
<b>Mol wt</b>	N/A
<b>Species reactivity</b>	Human, Rat, Mouse
<b>Clonality</b>	Polyclonal
<b>Recommended application</b>	WB, IHC-p, IF
<b>Concentration</b>	1 mg/ml
<b>Full name</b>	TATA-box-binding protein
<b>Synonyms</b>	TATA-box-binding protein ;TATA sequence-binding protein;TATA-binding factor;TATA-box factor;Transcription initiation factor TFIID TBP subunit; TATA-box-binding protein; TATA sequence-binding protein; TATA-binding factor; TATA-box factor; Transcription initiation factor TFIID TBP subunit

**This product is for research use only, not for use in human, therapeutic or diagnostic procedure.**

### Background

Initiation of transcription by RNA polymerase II requires the activities of more than 70 polypeptides. The protein that coordinates these activities is transcription factor IID (TFIID), which binds to the core promoter to position the polymerase properly, serves as the scaffold for assembly of the remainder of the transcription complex, and acts as a channel for regulatory signals. TFIID is composed of the TATA-binding protein (TBP) and a group of evolutionarily conserved proteins known as TBP-associated factors or TAFs. TAFs may participate in basal transcription, serve as coactivators, function in promoter recognition or modify general transcription factors (GTFs) to facilitate complex assembly and transcription initiation. This gene encodes TBP, the TATA-binding protein. A distinctive feature of TBP is a long string of glutamines in the N-terminus. This region of the protein modulates the DNA bin

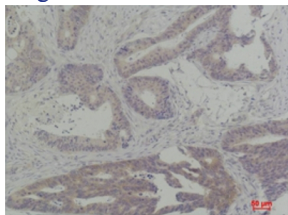
### Recommended Dilution

WB: 1: 500 - 1: 2000

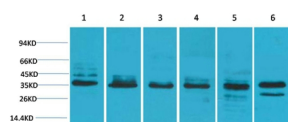
IHC: 1: 50 - 1: 200

Not yet tested in other applications.

### Images



Immunohistochemical analysis of paraffin-embedded Human Breast Carcinoma using TBPRabbit pAb diluted at 1:200.



Western blot analysis of 1) HeLa, 2) 293T, 3) C2C12, 4) Mouse Liver Tissue, 5) PC12, 6) Rat Brain Tissue with TBP Rabbit pAb diluted at 1:2,000.

### Storage

-20°C for 1 year

501 Changsheng S Rd, Nanhu Dist, Jiaxing, Zhejiang, China

Tel: 86 21 31007137 | E-mail: [save@bt-laboratory.com](mailto:save@bt-laboratory.com) | [www.bt-laboratory.com](http://www.bt-laboratory.com)