

CD218b Polyclonal Antibody

Description

Product type	Primary Antibody
Code	BT-AP14803
Host	Rabbit
Isotype	IgG
Size	20ul, 50ul, 100ul
Immunogen	Synthetic peptide from human protein at AA range: 291-340
Mol wt	N/A
Species reactivity	Human, Rat, Mouse
Clonality	Polyclonal
Recommended application	IHC-p, IF, ELISA
Concentration	1 mg/ml
Full name	Interleukin-18 receptor accessory protein
Synonyms	Interleukin-18 receptor accessory protein ;IL-18 receptor accessory protein;IL-18RAcP;Accessory protein-like;AcPL;CD218 antigen-like family member B;CDw218b;IL-1R accessory protein-like;; Interleukin-18 receptor accessory protein; IL-18 receptor accessory protein; IL-18RAcP; Accessory protein-like; AcPL; CD218 antigen-like family member B; CDw218b; IL-1R accessory protein-like; IL-1RacPL; Interleukin-1 receptor 7; IL-1R-7; IL-1R7; Interleukin-18 receptor accessory protein-like; Interleukin-18 receptor beta; IL-18R-beta; IL-18Rbeta; CD antigen CD218b

This product is for research use only, not for use in human, therapeutic or diagnostic procedure.

Background

The protein encoded by this gene is an accessory subunit of the heterodimeric receptor for interleukin 18 (IL18), a proinflammatory cytokine involved in inducing cell-mediated immunity. This protein enhances the IL18-binding activity of the IL18 receptor and plays a role in signaling by IL18. Mutations in this gene are associated with Crohn's disease and inflammatory bowel disease, and susceptibility to celiac disease and leprosy. Alternatively spliced transcript variants of this gene have been described, but their full-length nature is not known.

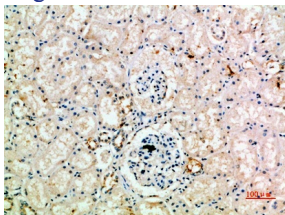
Recommended Dilution

IHC-p: 1: 50 - 1: 200

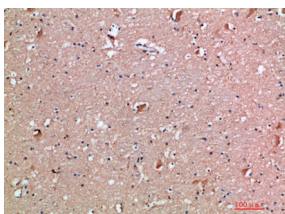
ELISA: 1: 10000 - 1: 20000

Not yet tested in other applications.

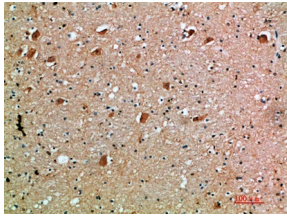
Images



Immunohistochemical analysis of paraffin-embedded human-kidney, antibody was diluted at 1:200



Immunohistochemical analysis of paraffin-embedded human-brain, antibody was diluted at 1:200



Immunohistochemical analysis of paraffin-embedded human-brain, antibody was diluted at 1:200

Storage

-20°C for 1 year

501 Changsheng S Rd, Nanhu Dist, Jiaxing, Zhejiang, China

Tel: 86 21 31007137 | E-mail: save@bt-laboratory.com | www.bt-laboratory.com