

TCAL5 Polyclonal Antibody

Description

Product type	Primary Antibody
Code	BT-AP14809
Host	Rabbit
Isotype	IgG
Size	20ul, 50ul, 100ul
Immunogen	Synthesized peptide derived from part region of human protein
Mol wt	N/A
Species reactivity	Human, Mouse
Clonality	Polyclonal
Recommended application	WB, ELISA
Concentration	1 mg/ml
Full name	Transcription elongation factor A protein-like 5
Synonyms	Transcription elongation factor A protein-like 5 ;TCEA-like protein 5;Transcription elongation factor S-II protein-like 5

This product is for research use only, not for use in human, therapeutic or diagnostic procedure.

Background

This gene, which is located on the X chromosome, encodes a protein which contains a BEX (brain expressed X-linked like family) domain. This domain is found in proteins encoded by the TCEAL elongation factor (transcription elongation factor A (SII)-like) gene family also located on the X chromosome. The coding region for this gene is located entirely in the terminal exon.

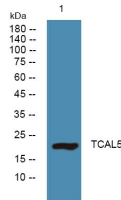
Recommended Dilution

WB: 1: 500 - 1: 2000

ELISA: 1: 5000 - 1: 20000

Not yet tested in other applications.

Images



Western blot analysis of lysates from A431 cells, primary antibody was diluted at 1:1000, 4°C overnight

Storage

-20°C for 1 year