

CD242 Polyclonal Antibody

Description

Product type	Primary Antibody
Code	BT-AP14814
Host	Rabbit
Isotype	IgG
Size	20ul, 50ul, 100ul
Immunogen	Synthetic peptide from human protein at AA range: 141-190
Mol wt	N/A
Species reactivity	Human, Mouse
Clonality	Polyclonal
Recommended application	IHC-p, IF, ELISA
Concentration	1 mg/ml
Full name	Intercellular adhesion molecule 4
Synonyms	Intercellular adhesion molecule 4 ;ICAM-4;Landsteiner-Wiener blood group glycoprotein;LW blood group protein;CD antigen CD242; Intercellular adhesion molecule 4; ICAM-4; Landsteiner-Wiener blood group glycoprotein; LW blood group protein; CD antigen CD242

This product is for research use only, not for use in human, therapeutic or diagnostic procedure.

Background

This gene encodes the Landsteiner-Wiener (LW) blood group antigen(s) that belongs to the immunoglobulin (Ig) superfamily, and that shares similarity with the intercellular adhesion molecule (ICAM) protein family. This ICAM protein contains 2 Ig-like C2-type domains and binds to the leukocyte adhesion LFA-1 protein. The molecular basis of the LW(A)/LW(B) blood group antigens is a single aa variation at position 100; Gln-100=LW(A) and Arg-100=LW(B). Alternative splicing results in multiple transcript variants encoding distinct isoforms.

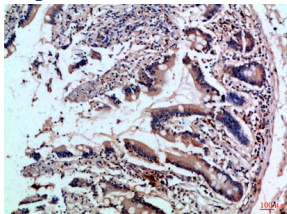
Recommended Dilution

IHC-p: 1: 50 - 1: 200

ELISA: 1: 10000 - 1: 20000

Not yet tested in other applications.

Images



Immunohistochemical analysis of paraffin-embedded Human-colon, antibody was diluted at 1:100

Storage

-20°C for 1 year