

CD272 Polyclonal Antibody

Description

Product type	Primary Antibody
Code	BT-AP14815
Host	Rabbit
Isotype	IgG
Size	20ul, 50ul, 100ul
Immunogen	Synthesized peptide derived from the Internal region of human CD272.
Mol wt	32834
Species reactivity	Human, Rat, Mouse
Clonality	Polyclonal
Recommended application	WB, ELISA
Concentration	1 mg/ml
Full name	B- and T-lymphocyte attenuator
Synonyms	B- and T-lymphocyte attenuator; BTLA; B- and T-lymphocyte attenuator; B- and T-lymphocyte-associated protein; CD antigen CD272

This product is for research use only, not for use in human, therapeutic or diagnostic procedure.

Background

This gene encodes a member of the immunoglobulin superfamily. The encoded protein contains a single immunoglobulin (Ig) domain and is a receptor that relays inhibitory signals to suppress the immune response. Alternative splicing results in multiple transcript variants. Polymorphisms in this gene have been associated with an increased risk of rheumatoid arthritis.

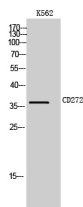
Recommended Dilution

WB: 1: 500 - 1: 2000

ELISA: 1: 40000

Not yet tested in other applications.

Images



Western Blot analysis of K562 cells using CD272 Polyclonal Antibody

Storage

-20°C for 1 year