

## CD300e Polyclonal Antibody

### Description

Product type	Primary Antibody
Code	BT-AP14819
Host	Rabbit
Isotype	IgG
Size	20ul, 50ul, 100ul
Immunogen	Synthetic peptide from human protein at AA range: 31-80
Mol wt	N/A
Species reactivity	Human, Rat, Mouse
Clonality	Polyclonal
Recommended application	IHC-p, IF, ELISA
Concentration	1 mg/ml
Full name	CMRF35-like molecule 2
Synonyms	CMRF35-like molecule 2 ;CLM-2;CD300 antigen-like family member E;CMRF35-A5;Immune receptor expressed on myeloid cells 2;IREM-2;Polymeric immunoglobulin receptor 2;PIgR-2;PIgR2;Poly-Ig ; CMRF35-like molecule 2; CLM-2; CD300 antigen-like family member E; CMRF35-A5; Immune receptor expressed on myeloid cells 2; IREM-2; Polymeric immunoglobulin receptor 2; PIgR-2; PIgR2; Poly-Ig receptor 2; CD antigen CD300e

**This product is for research use only, not for use in human, therapeutic or diagnostic procedure.**

### Background

This gene encodes a member of the CD300 glycoprotein family of cell surface proteins expressed on myeloid cells. The protein interacts with the TYRO protein tyrosine kinase-binding protein and is thought to act as an activating receptor.

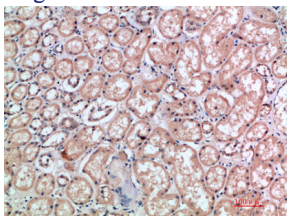
### Recommended Dilution

IHC-p: 1: 50 - 1: 200

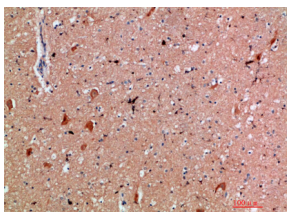
ELISA: 1: 10000 - 1: 20000

Not yet tested in other applications.

### Images



Immunohistochemical analysis of paraffin-embedded human-kidney, antibody was diluted at 1:200



Immunohistochemical analysis of paraffin-embedded human-brain, antibody was diluted at 1:200

## Storage

-20°C for 1 year

501 Changsheng S Rd, Nanhu Dist, Jiaxing, Zhejiang, China

Tel: 86 21 31007137 | E-mail: [save@bt-laboratory.com](mailto:save@bt-laboratory.com) | [www.bt-laboratory.com](http://www.bt-laboratory.com)