

## CD320 Polyclonal Antibody

### Description

Product type	Primary Antibody
Code	BT-AP14821
Host	Rabbit
Isotype	IgG
Size	20ul, 50ul, 100ul
Immunogen	Synthesized peptide derived from human protein . at AA range: 100-180
Mol wt	N/A
Species reactivity	Human, Mouse, Rat
Clonality	Polyclonal
Recommended application	WB, ELISA
Concentration	1 mg/ml
Full name	CD320 antigen
Synonyms	CD320 antigen ;8D6 antigen;FDC-signaling molecule 8D6;FDC-SM-8D6;Transcobalamin receptor;TCbLR;CD antigen CD320

This product is for research use only, not for use in human, therapeutic or diagnostic procedure.

### Background

This gene encodes the transcobalamin receptor that is expressed at the cell surface. It mediates the cellular uptake of transcobalamin bound cobalamin (vitamin B12), and is involved in B-cell proliferation and immunoglobulin secretion. Mutations in this gene are associated with methylmalonic aciduria. Alternatively spliced transcript variants encoding different isoforms have been found for this gene.

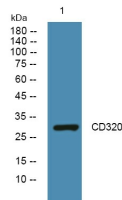
### Recommended Dilution

WB: 1: 500 - 1: 2000

ELISA: 1: 5000 - 1: 20000

Not yet tested in other applications.

### Images



Western blot analysis of lysates from SW480 cells, primary antibody was diluted at 1:1000, 4°C overnight

### Storage

-20°C for 1 year