

## CD327 Polyclonal Antibody

### Description

Product type	Primary Antibody
Code	BT-AP14822
Host	Rabbit
Isotype	IgG
Size	20ul, 50ul, 100ul
Immunogen	Synthetic peptide from human protein at AA range: 71-120
Mol wt	N/A
Species reactivity	Human, Rat, Mouse
Clonality	Polyclonal
Recommended application	IHC-p, IF, ELISA
Concentration	1 mg/ml
Full name	Sialic acid-binding Ig-like lectin 6
Synonyms	Sialic acid-binding Ig-like lectin 6 ;Siglec-6;CD33 antigen-like 1;CDw327;Obesity-binding protein 1;OB-BP1;CD antigen CD327; Sialic acid-binding Ig-like lectin 6; Siglec-6; CD33 antigen-like 1; CDw327; Obesity-binding protein 1; OB-BP1; CD antigen CD327

**This product is for research use only, not for use in human, therapeutic or diagnostic procedure.**

### Background

This gene encodes a member of the SIGLEC (sialic acid binding immunoglobulin-like lectin) family of proteins. The encoded transmembrane receptor binds sialyl-TN glycans and leptin. Placental expression of the encoded protein is upregulated in preeclampsia.

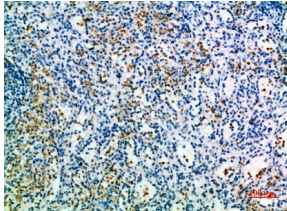
### Recommended Dilution

IHC-p: 1: 50 - 1: 200

ELISA: 1: 10000 - 1: 20000

Not yet tested in other applications.

### Images



Immunohistochemical analysis of paraffin-embedded human-spleen, antibody was diluted at 1:200

### Storage

-20°C for 1 year